

IUE

Iwi United Engaged, Ltd

Ki te kaahore he whakakitenga, ka ngaro te Iwi
Without foresight or vision, the people will be lost

Paanui

ISSUE: 5
August 2023

Ko te Atua too taatou piringa
ka puta ka ora.
Paimaarire

Manaaki Sessions

[Manaaki link](#)

Next Manaaki session
17/08/2023 @ 1900hrs

Consultations

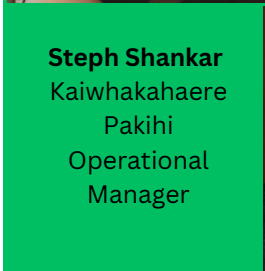
To set an appointment please visit our booking system.
www.picktime.com/IUEbookings
Choose your consultant through locations ie:
Whaea Misty consultation/Manaaki.
Pick a preference of kanohi-ki-te-kanohi OR zui,
the choice is yours.
Include a brief summary of your needs and study



Misty Edmonds
Te Tumu
Whakarae
CEO

IWI UNITED ENGAGED LIMITED

Commitment to advancing Maaori health and wellbeing through the development of culturally informed and relevant research.



Steph Shankar
Kaiwhakahaere
Pakihi
Operational
Manager



**Whaea
Te Inuwai Elia**
Kaitautoko
Cultural Support

Nga paanui

**He mihi aroha teenei ki ngeetahi
o nga whaanau
E mahia te mahi hei painga
mo te whiwhi puutea. ..**

A huge congratulations to whaanau
that were successful in their HRC
Grants

Well done and all the best from the
whaanau of
Iwi United Engaged Limited

**We would like to re-affirm the
restructure within our whaanau
for your information**

Kevin Roos
Kaimahi
Sub-Contractor

MAANAWATIA A MATARIKI

MAANAWA MAIEA TE PUTANGA O
MATARIKI
MAANAWA MAIEA TE ARIKI O TE
RANGI
MAANAWA MAIEA TE MAATAHI O TE
TAU

Celebrate the rising of Matariki
Celebrate the rising of the lord of the
sky
Celebrate the raising of the New Year

FOR MORE RESOURCES ON MATARIKI
WWW.MATARIKI.COM

KARAKIA WHAKAMUTUNGA

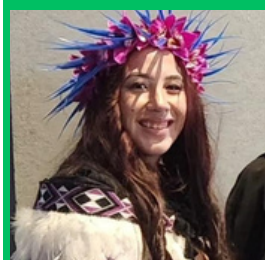
KIA TAU KIA TAATOU KATOA
TE ATAWHAI O TOO TAATOU ARIKI
A IHU KARAITI
ME TE AROHA O TE ATUA ME TE
WHIWHINGA O TE KOTAHITANGA
KI TE WAIRUA TAPU
AKE AKE AKE AMINE



Xiale Paane
Tapuhi - Kaimahi
Sub Contractor



Kahu Ama
Tapuhi Maaori
Kaimahi
Sub Contractor



Doing great stuff



PRESENTS

An online introduction to the popular

Whaia Te Tika series over 2 x 4 hour workshops



Limited spaces available so get in quick

Don't be hoha - leave a koha

Register NOW

at www.eventbrite.co.nz or click on the links below

Workshop 1 Key topics include:

- Worldview, positionality, bias and racism
- What it means to be a Tiriti Partner
- Structural racism and cultural discrimination
- Deficit framing of Māori
- Equity vs equality

August 21st

<https://www.eventbrite.co.nz/e/whaia-te-tika-introductory-series-workshop-1-tickets-688916637207?aff=ebdssbdestsearch>

August 24th

<https://www.eventbrite.co.nz/e/whaia-te-tika-introductory-series-workshop-1-tickets-688932504667?aff=ebdssbdestsearch>

Workshop 2 Key topics include:

- 5 principles of Te Tiriti o Waitangi
- Understanding your positionality as a Tiriti partner
- Kaupapa Māori application to research and practice
- Considerations for Māori engagement
- Consultation, collaboration and co-design between Tiriti partners

August 28th

<https://www.eventbrite.co.nz/e/whaia-te-tika-introductory-series-workshop-2-tickets-688935764417?aff=ebdssbdestsearch>

August 31st

<https://www.eventbrite.co.nz/e/whaia-te-tika-introductory-series-workshop-2-tickets-688939515637?aff=ebdsoporgprofile>

HAVE YOUR SAY -

We wish to share some important kaupapa on behalf of the rangahau team at Hapai Te Hauora

We know it can be quite a struggle to get baby enrolled with their doctor in time to get their 6-week immunisations. That's why we're having a kōrero with whānau on what we can do to make it easier for them.

We want our whānau to be able to get vaccinated and prevent getting really sick or having to go to hospital.

We're recruiting 20 whānau who:

- Whakapapa Māori
- Have a tamariki between 6 weeks and 12 months old
- Wanted to enrol their baby with a GP/ primary healthcare provider
- and didn't get enrolled OR didn't get their 6 week vaccinations
- Parents who are 16 years or older

If you want to find out a little bit more, we've created some videos so whānau can make an informed choice

To find out more, please click on this link:

[Pepi immunisation- Participant Information Sheet](#)



KING TUHEITIA CORONATION CELEBRATION



PROGRAMME



SUNDAY 6 AUGUST

Indoor Bowls, 10.00am - 3.00pm

Kimiora, Turangawaewae Marae

Golf, 10.00am - 4.00pm

Ngaaruawaahia Golf Course

TUESDAY 15 AUGUST

Prayer Dinner for Te Arikinui

Te Atairangikaahu, 6.00pm

Turangawaewae Marae



FRIDAY 18 AUGUST

Flag, 7.00am

Tuurongo House, Turangawaewae Marae

Tainui Kawe Mate, 9.00am

Marae Atea, Turangawaewae Marae

Lunch, 12.00pm

Kimiora, Turangawaewae Marae

Kapa Haka, 2.00pm

Marae Atea, Turangawaewae Marae

Power Pulling, 6.00pm starts

Pare Waikato, Turangawaewae Marae

SATURDAY 19 AUGUST

Flag, 7.00am

Tuurongo House, Turangawaewae Marae

Motu Kawe Mate, 9.00am

Marae Atea, Turangawaewae Marae

Rangatahi games, 9.30am

Lunch, 12.00pm

Kimiora, Turangawaewae Marae

Kapa Haka, 2.00pm

Marae Atea, Turangawaewae Marae



SUNDAY 20 AUGUST

Ratana & Taihauaauru, 6.45am

Marae Atea, Turangawaewae Marae

Flag, 7.00am

Tuurongo House, Turangawaewae Marae

Political Parties, 9.00am

Marae Atea, Turangawaewae Marae

Karakia o te Raatapu

Sports, 9.30am

Paterson Park

Lunch, 12.00pm

Kimiora, Turangawaewae Marae

Kapa Haka, 2.00pm

Marae Atea, Turangawaewae Marae



MONDAY 21 AUGUST

TE RAA KORONEIHANA

O KIINGI TUHEITIA

Flag, 7.00am

Tuurongo House, Turangawaewae Marae

Karakia, 10.00am

Marae Atea, Turangawaewae Marae

Mihimihī o te Motu, 11.00am

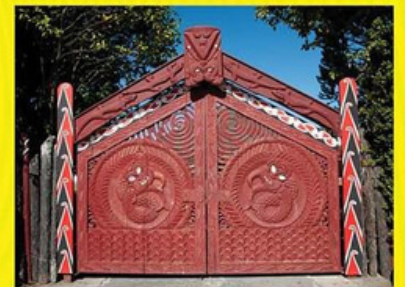
Marae Atea, Turangawaewae Marae

Te Kauwhau aa Te Kiingi, 12.00pm

Marae Atea, Turangawaewae Marae

Haakari, 1.00pm

Kimiora, Turangawaewae Marae



Please follow our socials for updates and live coverage



Kia kaha

Let us stand strong together to advance Maori health and wellbeing through
culturally responsive rangahau

ACKNOWLEDGEMENTS



KAIRANGAHAU HUI

Iwi United Engaged have started the ball rolling to bring everyone together under the one roof.

It is our desire to introduce:

Kairangahau to te Ao Maori by way of a "Hui a Motu"

HUI 1 - PROPOSED DATE - APRIL 2024

**Kei Turangawaewae Marae -
Ngaaruawaahia**

HUI 2 - PROPOSED DATE - OCT 2024

**Kei Ngaa Hau e Wha Marae - Otautahi
(TBC)**

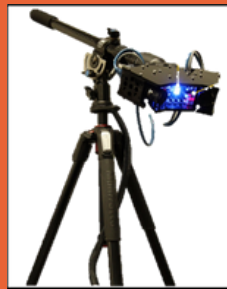
If you are interested in being part of this kaupapa contact Whaea for more details: whaea@iue.net.nz

Beating Heart Disease



Kia ora tātou
Ko Mt everest Te Maunga
Ko Bagmati Te Awa
Nō Kathmandu Ahau
Ko Khwaounjoo Tōku Whānau
Ko Prash Tōku Ingoa

I am part of the 12 labours and cardiac mechanics group at the Auckland Bioengineering Institute, Waipapa Taumata Rau, University of Auckland. I work alongside Martyn Nash, Andrew Taberner, Poul Nielsen, Alexander Dixon, and Merryn Tahwhai, who all have links/connections to Tamaki Makaurau. I also work with Yusuf Cakmak from the Ōtākou Whakaihu Waka, University of Otago. Together we are developing a tool (below) that is able to provide information about heart health using only cameras.



The movements of the blood in the neck are often inspected by doctors to provide information about heart function. We have developed a tool and a computer algorithm to measure the skin movement on the neck caused by the heartbeat and blood flow. The method is being trailed at Auckland City Hospital and results show the movements provide information about the heart function. Working alongside IUE we have planned to further test the system's ability to measure heart function from a range of people with varying skin complexions, reflective of NZ's population. We also wish to better understand what communities and whānau would like to know about our device when presented in clinical settings. The outcomes of this study provide a pathway to create a device that will be effective for all New Zealanders. Such devices have the potential to provide supplementary information in the diagnosis of cardiovascular diseases, and potentially lessen the need for hospital visits.

Whakaaturanga Rangahau Wiki Hauora (Health Week Research Expo) in 2024.

Kia Aroha Campus is a special character school (Year 0-13) with two distinct streams:

- 1) Te Whānau o Tupuranga (Centre for Māori Education) and
- 2) Fanau Pasifika (Centre for Pasifika Education).

We personally invite you and your rangahau team into Kia Aroha Campus for our Whakaaturanga Rangahau Wiki Hauora (Health Week Research Expo) in 2024. The kaupapa is Hauora (health) and Rangahau (research) with an emphasis on health conditions impacting our tamariki, rangatahi and the wider whānau.

The dates are 28th -30th May 2024

Day 1: Te Whānau o Tupuranga (years 0-6),

Day 2: Fanau Pasifika (years 7-13), and

Day 3: Te Whānau o Tupuranga (years 7-13).

Our kaupapa is Pae ora (Healthy futures):

We would like you and your team to introduce your area of rangahau aligned with a condition, disease that is impacting our whānau. Be innovative (display, interactive activity), include resources appropriate for the tamariki and rangatahi to take home. Examples, Rheumatic fever could be a cardiac app., Childhood vaccination could be jet injection

If you would like to participate in this event, please contact Whaea Misty misty@iue.net.nz for an enrolment form.