

# IUE

## Iwi United Engaged, Ltd

**Ki te kaahore he whakakitenga, ka ngaro te Iwi**  
*Without foresight or vision, the people will be lost*

ISSUE: 9

Hakihea  
(December)  
2023

Ko te Atua too taatou piringa  
ka puta ka ora.  
Paimaarire

Manaaki Sessions

Hononga  
<https://meet.google.com/ksb-xndb-sge>

Next Manaaki session  
21/12/2023 @ 1900hrs

Consultations

To set an appointment please visit our booking system. [www.picktime.com/IUEbookings](http://www.picktime.com/IUEbookings)  
Choose your consultant through locations ie:  
Whaea Misty consultation/Manaaki.  
Pick a preference of kanohi-ki-te-kanohi OR zui,  
the choice is yours.  
Include a brief summary of your needs and study



Misty Edmonds  
Te Tumu Whakarae  
CEO



Steph Shankar  
Kai Wakahaere  
Manager



Whaea Te Inuwai  
Kaitautoko  
Cultural Support

## MEET THE TEAM

**IWI UNITED ENGAGED LIMITED**  
Commitment to advancing Maaori health  
and wellbeing through the development of  
culturally informed and relevant research.



Xiale Paane  
Tapuhi Maaori  
Sub Contractor



Kahu Ama  
Tapuhi Maaori  
Sub Contractor



Kate Lee Afoa  
Tapuhi Maaori  
Sub Contractor

Whakamoemiti te Atua i toona waahi ngaro,  
te Atua kua whaanau mai nei hei Tamaiti,  
hei Kaiwhakaora mo te Ao.  
Ko te ora maramatanga i ruia ki te whenua  
hei oranga mo te iti me te rahi. Paimaarire

Christmas is a season for gathering and remembering.  
We do so with great appreciation for the blessings in  
our lives.

The message of peace, hope, joy and love are  
critical for us all

As we reflect on the year gone by, we recall with deep  
aroha for the loss of many whaanau.  
Moe mai raa koutou.

Let us take the time to rest and enjoy our families  
and the sunshine this holiday season.

May you all have a safe and happy Christmas  
filled with love & positivity that takes you into a  
prosperous New Year  
Maa te Atua koutou e manaaki  
Paimaarire

Tēnā kōutou katoa,

As we approach the festive season, for many,  
it is a time to celebrate and share our time and  
gifts with those that matter to us. Working  
alongside many of you throughout the year, at  
every interaction, -time and gifts were shared.  
On behalf of IUE I would like to thank you, for  
the daily celebrations of sharing your time and  
whakaaro (thoughts) with us. The koha IUE  
received has been overwhelming and  
humbling-including the relationships, new  
insights and understandings, trust, friendship  
and whanau. Ka whakanuia e matou nga mea  
katoa i tohatoahia e matou. We celebrate all  
that we shared.

Tangata Whenua, Tangata Tiriti, Ngā Mihinui.

Meri Kirihimete katoa. Misty



If you are doing good stuff and would like us to share it through our pānui,  
please contact us [whaea@iue.net.nz](mailto:whaea@iue.net.nz)

Iwi United Engaged would like to tautoko Andrew Taberner, Bryan Ruddy and James McKeage, in congratulating **Michael Hoffman** for successfully defending his PHD thesis Lancet and Needle-Free Blood Insulin Therapy using a Controllable Jet Injector.

Michael was commended by one of his examiner who apparently stated that this was done to the highest standard for a PHD Student

Well done Michael - keep up the great work

You can read some of Michael's work here:

<https://journals.sagepub.com/doi/abs/10.1177/19322968231161361>

<https://doi.org/10.1080/17434440.2023.2170783>

## He Poroporoaki

Anei anoo he mihi aroha ki a koe  
e te Mareikura a Natalie

too maatou whakaaro e haere pai atu koe ki te  
mahi i ngaa mahi ki taa waahi hei te mutunga  
hoki pai mai koe ki waenganui i te whaanau o  
ABI me IUE hoki.

You are the epitome of administration lady and  
on behalf of Iwi United we wish you well

## Congratulations



Mark Billingham  
Marsden



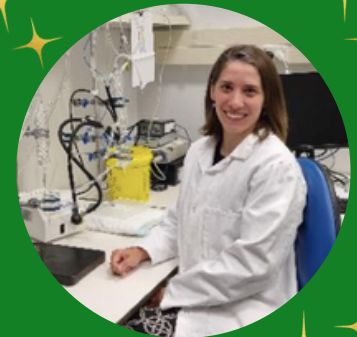
Kelly Burrowes  
Marsden



Hayley Reynolds  
Marsden

## HEART HEALTH IN DIABETES

Tēnā koutou katoa  
Ko Maungawhau te maunga  
Ko Waitematā te moana  
He Pākehā ahau  
Nō Aotearoa ahau  
Ko Ahorangi Tūhono au i Waipapa Taumata Rau  
Ko Emma rāua ko Bianca aku tamāhine  
Ko Kim Mellor tōku ingoa



Kia ora koutou. My research group, the Cellular & Molecular Cardiology lab, is focused on developing new treatments for heart disease for people living with diabetes. Whānau with loved ones with diabetes will know that heart problems can be a big part of how diabetes affects their ability to live life to the fullest. And heart disease is often the reason that people with diabetes have their lives end too early. Our research has shown that diabetes is linked with a special type of heart disease which is not easily treated by current medications. We have discovered that abnormal fructose sugar metabolism is an important cause of these underlying heart issues experienced by people with diabetes. We are currently testing a new drug that slows down the metabolism of fructose inside the heart muscle cells. We are excited to have early data suggesting that this drug has a large impact on improving the heart function in pumping blood throughout the body. These studies are at an early stage, currently involving testing the drug in pre-clinical animal models. As Tiriti partners we would love the opportunity to engage and work together with Māori communities. If you are interested in this research and/or would like to share your thoughts or experiences, please get in touch via IUE.

Kia kaha

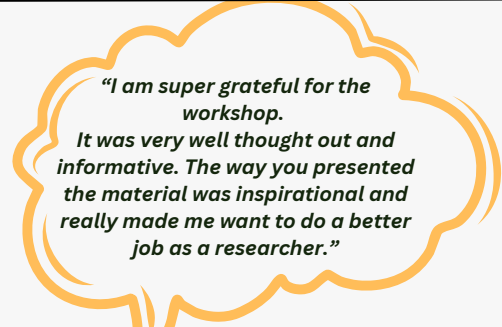
Let us stand strong together to advance Māori health and wellbeing through culturally responsive rangahau



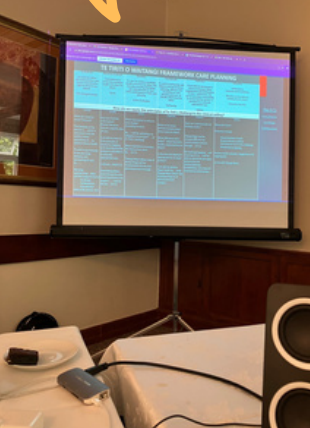
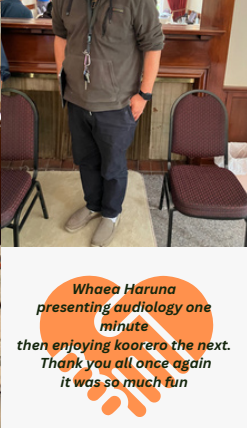
Whaia Te Tika - Doing Good Stuff  
30 November 2023



"...some of us have attended seminars at Uni, but they haven't been really useful in terms of opening the topic so well and conveying the message so clearly as your workshops."



"I am super grateful for the workshop. It was very well thought out and informative. The way you presented the material was inspirational and really made me want to do a better job as a researcher."



Whaea Haruna presenting audiology one minute then enjoying koorero the next. Thank you all once again it was so much fun



Running 2 workshop series alongside each other this semester we decided to do something special for our final wānanga of the 2023. We combined our rōpu from ABI and TTM and enhance the awesomeness. We were joined by Whaea Haruna, Whaea Jenny Weller, Whaea Nishi Karunasinghe and Matua Jason Turuwhenua who shared their experiences of Whaia Te Tika and working within a kaupapa Māori approach to rangahau to enhance Māori engagement. Their experiences and successes were inspirational and many of our whānau in attendance had such positive things to say afterwards. It was a privilege to share space with each and every one of you. We are so grateful to be on this journey with you all and we look forward to welcoming more whānau to Whaia Te Tika in 2024.



"One of the standout aspects that I truly enjoyed from the workshops was the invigorating group discussions. The exchange of ideas and perspectives among participants was not only insightful but also deeply inspiring. Despite the diversity in our backgrounds, it was heartening to witness a shared commitment among all participants to do the right thing."



Summer Student Support Person  
Administration of scholarship will be handled by UoA and Research office which is a tax-free stipend of \$6,750 paid fortnightly

Criteria shall include

The ability to conduct a research project under supervision for 10 weeks over the summer months.  
The ability to high-achieve domestic and international students who will have completed at least two years of equivalent full-time study in an undergraduate degree by December 2023.

**Must be available for onsite activities in Grafton**

**Start Date:** November 2023 and February 2024.

**Kaupapa/Purpose:** To develop a drug-delivery device for hearing therapeutic inclusive of a lot of Lab-component on this project

Any queries email: [h.suzuki-kerr@auckland.ac.nz](mailto:h.suzuki-kerr@auckland.ac.nz)

Kia kaha

Let us stand strong together to advance Māori health and wellbeing through culturally responsive rangahau



## PARTNERSHIP IN PUBLICATIONS

DON'T BE HOHA  
*Leave a koha*

Health providers' experiences of health technologies within Te Tai Tokerau, Aotearoa New Zealand

Tia Dawes, Jason Turuwhenua & Misty Edmonds

### ABSTRACT

An understanding of the perspectives of Māori healthcare providers to the emergence of new health technologies is essential for developing technologies that respond to patient need. In Aotearoa New Zealand, inequities in health outcomes fall unevenly on Māori, who experience worse health outcomes than other New Zealanders. This includes access to technologies that might mitigate some of the worst health outcomes. While health technology is a broad field, this study aims to explore the experiences of health technologies of predominantly Māori health providers across the region of Te Tai Tokerau, a region characterised by its high Māori population. Eight healthcare professionals participated in semi-structured interviews. Thematic analysis was used to analyse the data. Three themes were generated: 1. empowering whānau with greater control over their own health outcomes; 2. community networks will play a key role in the delivery of technologies and 3. challenges to the uptake of technologies. Health providers have the willingness to trial new technologies, motivated by the potential of new technologies to empower whānau in the care and treatment of illness. However, understanding the patient perspective of how they wish to receive care remains an imperative if health disparities are to be addressed.

To link to this article: <https://doi.org/10.1080/1177083X.2023.2270003>

## Do you have an hour or two a month to help create change?



Aotearoa Leads  
Professor Katie Groom,  
Obstetric Lead  
Email: k.groom@auckland.ac.nz



Aotearoa Leads  
Associate Professor Chris  
McKinlay, Neonatal Lead  
Email: c.mckinlay@auckland.ac.nz

## PLATIPUS Indigenous Health Committee Call for Expressions of Interest from whānau Māori

Call to whānau Māori colleagues and friends We are keenly seeking whānau Māori researchers, health professionals and whānau with lived experience who would like to help shape the new era in perinatal health research in Aotearoa (New Zealand) and Australia. Strong Indigenous leadership and participation from the outset and across the trial's lifespan is integral to success. We are seeking interest from whānau Māori who wish to be part of the leadership team and/or members on the many Committees and Working Groups that will develop and sustain key aspects of the trial. Adaptive platform trials, if done well, have the capacity and capability to shift practice and improve health outcomes may make a real difference to the short and long-term outcomes for Indigenous communities. We are eager to work with whānau Māori who wish to develop this trial right from the start.

### Aspirations

- To engage with, prioritise and work alongside Aboriginal and Torres Strait Islander and Māori researchers, clinicians, and people with lived experience to develop, implement and improve the PLATIPUS Trial.
- To develop fundamental guiding principles (for each country) that outline cultural-specific processes that will: o influence site selection and training o determine recruitment practices that promote participation of Indigenous whānau. o determine data governance principles and protocols to ensure Indigenous data sovereignty. o guide the care, safety and support of Indigenous women, pēpi and whānau who choose to take part in the trial.
- To increase access to research, participation and ensure culturally safe research experiences for Aboriginal and Torres Strait Islander and whānau Māori.
- Consider the formation of a registry process.
- To develop culturally meaningful measurements of health and long-term health outcomes for Indigenous women, pregnant people, babies, children and whānau.
- To disseminate findings in a way that enables Indigenous communities to receive, use and benefit from this research.

### Proposed role

Ways of working We are in the process of designing governance structures and seeking input on this trial's design. We envisage the establishment of an Indigenous Health Committee which will sit alongside the Trial Steering and Management Committee. The Indigenous Health Committee will be co-Chaired by Māori and Aboriginal or Torres Strait Islander person/s. These co-Chairs will be members of the Trial Steering and Management Committee which provides overall leadership of PLATIPUS. The co-Chairs and/or members of the Indigenous Health Committee will be members of the the Trial Advisory Committee (large, consultancy group) and invited to be part of other Committees and Working Groups who lead components of work across the PLATIPUS platform.

For more information please see the information sheet accompanying this paanui.

Alternatively, you can contact Katie or Chris.

WATCH THIS SPACE. More information will follow for expressions of interest from Māori whānau to support all committee within PLATIPUS.





**Kaupapa Māori Best Practice : School Based Whānau Centre presents:  
Whakaaturanga Rangahau Wiki Hauora  
(Health Week Research Expo) in 2024.**

Our *School Based Whānau Centre* is led by neehi Māori Whaea Sheridan Hattaway-Martin and Whaea Misty Edmonds invite you to register your interest to be a part of this exciting event.

28th, 29th & 30th May 2024

**Relative to Pae ora-Healthy futures:** it is hoped that **you and your team can introduce your area of rangahau aligned with a condition, disease that is impacting our whanau in an innovative way** (display, interactive activity), including resources appropriate for the tamariki and rangatahi to take home(over the period of 3 days). **Day one will be our tamariki years 0-6, day two will be a Fanau Pasifika years 7-13, and day 3 will be Te Whanau O Tupuranga years 7-13**

We are looking for kairangahau who have a **connection with IUE** and have a **genuine interest in engaging with Māori whānau/whānui to advance Māori Health.**

If you would like to be a part of this event, please fill in the Expression of Interest form using the link below:

<https://forms.gle/RqCSVmsdzJh9vCRV8>

Spaces are LIMITED, so get registered quick.

If you have any questions please reach out to Misty at [misty@iue.net.nz](mailto:misty@iue.net.nz)



**People with Kidney Disease informing health care  
providers how to prevent harm.**

**He aha te whāinga mō tēnei rangahau  
What is the aim of the project?**

My aim is to analyse the current practices in providing and receiving vein preservation information to prevent harm. Furthermore, create in collaboration best practices to prevent harm.

This is important because these 'best practices' will keep health workers informed on the patients limitations to blood draw.

Your participation will support this research by helping me understand what your preferences are while receiving information on vein preservation and what best practices are according to you.

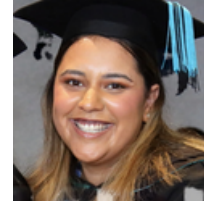
Moreover, your participation will also help in co-designing best practices to prevent harm.



## ACKNOWLEDGEMENTS



Nō South Africa ahau  
I whānau mai au I South Africa  
I tupu ake au I Aotearoa  
Ko Tamaki Makaurau taku kāinga noho  
Kei te mahi ahau ki AUT  
Ko ahau Research officer/designer ki  
AUT  
Ko T'heniel Chetty taku ingoa



Ko Taratara oku maunga  
Ko Waiarūhe oku awa  
Ko Waitangi oku moana  
Ko Ngatokimatawhaorua oku waka  
Ko Ngapuhi oku iwi  
Ko Ngati Hine oku Hapu  
Ko Te Titi O Waitangi me nga Ngati kawa oku  
marea  
Ko Mese Apiata oku whaea  
No reira ko Atarangi ahau



Ko Kau te maunga  
Ko Te Moana Nui a Kiwa te Moana  
Ko Air New Zealand te waka  
Ko Tonga te Iwi  
Ko Pea te hapū  
Ko te hahi o ihu karaiti o te hunga  
tapu o Ngā ra o muri nei te marae  
Ko Xiale Paane toku ingoa

## Are you a healthcare professional who has expertise in heart arrhythmias or Atrial Fibrillation?

We want to hear about your expertise & experience working with patients who have a heart arrhythmia/ Atrial Fibrillation (AF). This will help us create a long-term ECG monitoring device to help patients manage their heart condition.

### Eligibility Criteria:

- Healthcare professionals working with patients who have a heart arrhythmia/AF

### What's involved?

- One 30-45 Minute interview
- \$50 koha to acknowledge your contribution

## Do you or a whānau member have a heart condition that causes your heart to beat too fast, too slow or irregularly?

We want to hear about your healthcare journey so we can create a heart monitoring device to help improve your journey.  
Whānau are welcome to participate too.

### Eligibility Criteria:

- Have a heart arrhythmia / Atrial Fibrillation
- Are aged 20 or older

### What's involved?

- One 30-45 Minute interview
- \$50 koha to acknowledge your contribution

For more information please contact [xiale@iue.net.nz](mailto:xiale@iue.net.nz) or alternatively [theniel.chetty@aut.ac.nz](mailto:theniel.chetty@aut.ac.nz) to participate in this research

## KAIRANGAHAU HUI

### Iwi United Engaged

have started the ball rolling to bring everyone together under the one roof. It is our desire to introduce: Kairangahau to te Ao Māori by way of a "Hui a Motu"

### HUI 1 - PROPOSED DATE - 2024

Kei Turangawaewae Marae -  
Ngaaruawaahia

### HUI 2 - PROPOSED DATE - 2024

Kei Ngaa Hau e Wha Marae - Otautahi  
(TBC)

If you are interested in being part of this kaupapa

email: [whaea@iue.net.nz](mailto:whaea@iue.net.nz)

If you are doing good stuff and would like us to share it through our pānui,  
please contact us [whaea@iue.net.nz](mailto:whaea@iue.net.nz)