

IUE

Iwi United Engaged, Ltd

Ki te kaahore he whakakitenga, ka ngaro te Iwi
Without foresight or vision, the people will be lost

ISSUE: 8
Whiringa-ā-rangi
(November) 2023

Ko te Atua too taatou piringa
ka puta ka ora.
Paimaarire

Manaaki Sessions

Hononga
(To be confirmed)

Next Manaaki session
30/11/2023 @ 1900hrs

Consultations

To set an appointment please visit our booking system. www.picktime.com/IUEbookings
Choose your consultant through locations ie:
Whaea Misty consultation/Manaaki.
Pick a preference of kanohi-ki-te-kanohi OR zui,
the choice is yours.
Include a brief summary of your needs and study



Misty Edmonds
Te Tumu Whakarae
CEO



Steph Shankar
Kai Wakahaere
Manager



Whaea Te Inuwai
Kaitautoko
Cultural Support

IWI UNITED ENGAGED LIMITED
Commitment to advancing Maaori health and wellbeing through the development of culturally informed and relevant research.

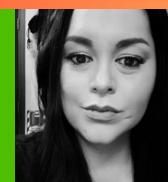
MEET THE TEAM



Xiale Paane
Tapuhi Maaori
Sub Contractor



Kahu Ama
Tapuhi Maaori
Sub Contractor



Kate Lee Afoa
Tapuhi Maaori
Sub Contractor



Ko te Atua too taatou piringa
Ka puta ka ora - Paimaarire

Anei anoo te mihi manahau ki a koe

Professor Merryyn Tawhai
Director for
Auckland Bioengineering Institute

Congratulations and well done
Ka mau te wehi

Iwi United Engaged



During the Australian Neuro-Otology meeting held October 27, there was also a PHD Taira presentation and this Guy is becoming prettywell known in our newsletter :)

Therefore, we are happy to join & congratulate

Ben Thomson

for his presentation of

"The Path of Least Resistance, approaching the round window from the outside world."

Australasian Neuro-Otology meeting

A combined meeting of Neuro-Otology Society of Australia (NOTSA) and the New Zealand Society for Balance Dizziness and Vertigo (NZSBDV) was held on 27 October at the Hilton Hotel

Guest speakers included Associate Professor Bryan Ward from Johns Hopkins University in the USA. Here a couple of photos of our Kaumatua aa Te Wharekotua Turuwhenua blessing a taonga and presenting at the same meeting. his taonga after blessing by Te Koroua at an

Rachael Taylor, PhD, MNZAS

Research Fellow

Department of Physiology and Centre for Brain Research
Faculty of Medical and Health Sciences
University of Auckland
New Zealand

Kia kaha

Let us stand strong together to advance Maaori health and wellbeing through culturally responsive rangahau

Mana Wahine - Congratulations



Hayley Reynolds

from Waipapa Taumata Rau
for success in securing a
New Zealand Marsden Standard Grant
for her lymphodema studies.

Associate Professor Kelly Burrowes

from Waipapa Taumata Rau having been awarded
a James Cook Research Fellowship titled imaging
exhaled breath, and in silica models: innovative
biomarkers to predict the long term effects of vaping



A Combined Whaia Te Tika Waananga

**Open invitation
Beaufords House - Totara Park**

Have some questions?
Have something you want to say and you don't
know how to say?
You are not sure how to say it?

**Nau mai - Haere mai
Contact: steph@iue.net.nz**

Summer Student Support Person

Administration of scholarship will be handled by UoA and Research office
which is a tax-free stipend of \$6,750 paid fortnightly

Criteria shall include

The ability to conduct a research project under supervision for 10 weeks over the summer months.
The ability to high-achieve domestic and international students who will have completed at least
two years of equivalent full-time study in an undergraduate degree by December 2023.

Must be available for onsite activities in Grafton

Start Date: November 2023 and February 2024.

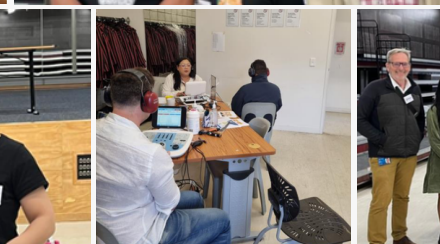
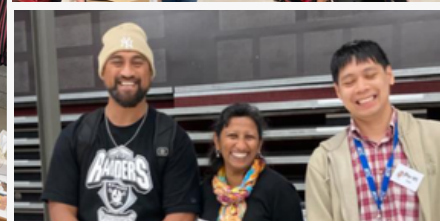
Kaupapa/Purpose: To develop a drug-delivery device for hearing therapeutic
inclusive of a lot of Lab-component on this project

Any queries email: h.suzuki-kerr@auckland.ac.nz

Kia Aroha College Hauora Day

Photos below taken from our successful hauora day at Kia Aroha College - supporting the health and wellbeing of
rangatahi through ongoing engagement and culturally responsive rangahau.

24-27th Whiringa-a-nuku. Hearing and vision screening was conducted by our kairangahau from Te Waipapa Rau. HEADSS
assessments were carried out by School nurses with the support of the Dept of Psychology from Te Waipapa Rau. Ngā
mihi nui kia koutou for coming together to support the rangatahi of our communities.



Kia kaha

Let us stand strong together to advance Maori health and wellbeing through culturally responsive rangahau

IUE Team

Iwi United Engaged (IUE) is committed to advancing Māori health and wellbeing through the development of culturally informed and relevant research



Misty Edmonds
Ngāti Towharetua
He Te Tumu Whakaere (CEO)
He Tapuhi
misty@iue.net.nz



Whaea Te Inuwaiti Elia
Tainui
He Rurahi
He Rongo Rauwhina I te
Kaupapa
whaea@iue.net.nz



Steph Shankar
Ngāti Towharetua
He Kaiwhakahaere Pūkahi
He kaiwhakahaere
steph@iue.net.nz



Kahu Ama
Ngāti Towharetua
He Tapuhi
He Kaimahi



Xiale Paame
He Tapuhi

BEATING HEART DISEASE



Kia ora tātou
Ko Mt everest Te Maunga
Ko Bagmati Te Awa
Nō Kathmandu Ahau
Ko Khwaounjoo Tōku Whānau
Ko Prash Tōku Ingoa

I am part of the Cardiac Mechanics group led by Prof. Martyn Nash and the 12 Labours Exemplar Cardiopulmonary Group. We have developed a computer algorithm to directly measure the skin movement (waveforms) on the neck caused by vessel pulsations. Working alongside IUE we have planned to further test the potential of this systems ability to measure waveforms from a range of people with varying skin complexions, reflective of NZ's diverse population.

We also wish to better understand what communities and whanau would like to know about our device when presented in clinical settings.

We cordially invite you to our focus group hui hosted by IUE where our Māori whanau can share their experiences and whakāro on heart disease and our machine.

SAT 28th OCT, 10am-12pm
Auckland Bioengineering Institute
6/70 Symonds Street, Grafton, Auckland

HUI AROTAHI @ ABI

What a successful turn out for this
Roopu Arotahi for
The Beating Heart Disease.
Plenty of questions asked and
Plenty of questions answered

Everyone left that little bit more wiser
and therefore a little bit more knowledgable.
**Ngaa mihi maioha ki a Matua Prash, ngaa Whaea me ngaa
Tapuhi Maori**



Chiropractic Scholarship Programme

Do you know someone who has the potential to become a great chiropractor and may be eligible for a scholarship? Please share this information with them.

By offering substantial financial support and structured mentorship, the programme aims to make chiropractic education accessible to a wider range of individuals and better reflect the diverse cultures and communities in New Zealand and the Pacific Islands. Three scholarships are available in 2024, each with a unique focus. They are named in honour of individuals who make a considerable contribution to the community, the College and/or the chiropractic profession. The scholarships available in 2024 are:

- **Dean Carter Chiropractic Scholarship:** This scholarship will assist a promising student of Māori descent. It seeks to empower Māori students, who may face financial challenges, to pursue a chiropractic education, with the goal of supporting them to make significant contributions to their communities and the chiropractic profession upon graduation.
- **Richie Barnett Chiropractic Scholarship:** This scholarship is designed to support a Pasifika student who has demonstrated exceptional commitment to community service and aspires to bring chiropractic care to their community.
- **Irene Gold Chiropractic Scholarship:** This scholarship seeks to empower future community leaders, particularly those who may not have otherwise considered a career in chiropractic due to financial hardship, to become chiropractors and make a significant contribution to their communities and the chiropractic profession.

These scholarships are for new students, starting their studies in 2024, who may not have otherwise considered a career in chiropractic due to financial challenges. Each of these scholarships provides full tuition fee coverage at NZCC, an annual living cost stipend of \$5,000, and ongoing mentorship throughout the student's tenure at the College.

You can find out more about the scholarships at: <https://chiropractic.ac.nz/scholarships>

The deadline for application is 30th November.

Kia kaha

Let us stand strong together to advance Maori health and wellbeing through culturally responsive rangahau

ACKNOWLEDGEMENTS



Mahitahi Trust
Ma te mahi tahi ka whiwhi ora
People together nurturing wellness



KAIRANGAHAU HUI

Iwi United Engaged

have started the ball rolling to bring everyone together under the one roof. It is our desire to introduce: Kairangahau to te Ao Māori by way of a "Hui a Motu"

HUI 1 - PROPOSED DATE - 2024

Kei Turangawaewae Marae -
Ngaaruawaahia

HUI 2 - PROPOSED DATE - 2024

Kei Ngaa Hau e Wha Marae - Otautahi
(TBC)

If you are interested in being part of this kaupapa

email: whaea@iue.net.nz

Pōātinitini Dizziness

We are exploring the hauora of dizziness, and particularly severe dizziness that can create a false sense that you or your surroundings are spinning or moving.

Severe dizziness doesn't just affect your head but can influence other parts of your hauora, including taha tinana, taha hinengaro, taha whanau, and taha wairua.

If you or your whanau have experienced severe dizziness we are interested in hearing how you have been affected.

Kia kaha koutou e te whaanau, kua e whakamaa
Haere mai ki te koorero, waea mai raanei.

AUT

IUE
Iwi United Engaged, Ltd



Contact: Xiale Paane
IUE Kaimahi
xiale@iue.net.nz