

# IUE

## Iwi United Engaged, Ltd

Ki te kaahore he whakakitenga, ka ngaro te Iwi  
Without foresight or vision, the people will be lost

### Paanui

ISSUE: 7  
Whiringa-ā-nuku  
(October) 2023

Ko te Atua too taatou piringa  
ka puta ka ora.  
Paimaarire

### Manaaki Sessions

#### Hononga

<https://meet.google.com/jgb-bqfe-nmb>

**Next Manaaki session**  
09/11/2023 @ 1900hrs

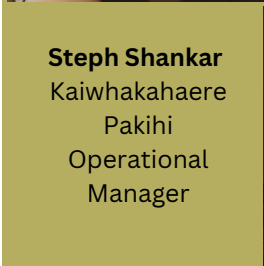
### Consultations

To set an appointment please visit our booking system.  
[www.picktime.com/IUEbookings](http://www.picktime.com/IUEbookings)  
Choose your consultant through locations ie:  
Whaea Misty consultation/Manaaki.  
Pick a preference of kanohi-ki-te-kanohi OR zui, the choice is yours.  
Include a brief summary of your needs and study



**Misty Edmonds**  
Te Tumu  
Whakarae  
CEO

**IWI UNITED ENGAGED LIMITED**  
Commitment to advancing Maaori health and wellbeing through the development of culturally informed and relevant research.



**Steph Shankar**  
Kaiwhakahaere  
Pakihi  
Operational  
Manager



**Whaea  
Te Inuwai Elia**  
Kaitautoko  
Cultural Support



**Jichao Zhao**  
Putahi Manawa



**Prashanna Khwaounjoo**  
Putahi Manawa



**Merryn Tawhai**  
HRC



**Martyn Nash**  
HRC

**Mark Billingham**  
MBIE



### CONGRATULATIONS

to the successful grant applications this round



**Whaea  
Te Inuwai Elia**  
Kaitautoko  
Cultural Support

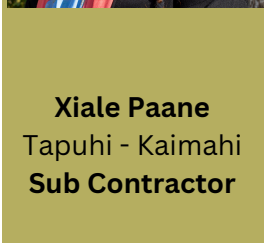


### CONGRATULATIONS

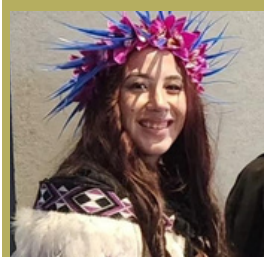
1st prize: A set of 10 Pukapuka - Ben Thomas  
2nd prize: A set of 5 Pukapuka - L.E



Winners of last months mini challenge for Te wiki o te reo Māori week



**Xiale Paane**  
Tapuhi - Kaimahi  
Sub Contractor



**Kahu Ama**  
Tapuhi Maaori  
Kaimahi  
Sub Contractor

We would like to announce a new addition to the whaanau of Iwi United

**Nau mai Haere mai  
Kate Afoa.**

Kate is a newly decorated Tapuhi Maaori and we are proud to welcome her to the whaanau



Doing great stuff

## The Experience of Medical Imaging Technologists in Communicating with Patients in a Multicultural Environment in Auckland.



Nica Abrasado, Dr Sibusiso Mdletshe  
University Of Auckland



## Main Themes

### CROSS-CULTURAL CHALLENGES IN PATIENT COMMUNICATION

- Effect on Patient Experience
- Impact on Procedural Aspects
- Staff Perspectives on Perceived Barriers

### ENHANCED PATIENT-CENTRED CARE THROUGH CULTURALLY RESPONSIVE COMMUNICATION

- Significance of Patient-Centred Care
- Cultural Affinity and Patient Comfort
- Active Engagement in Culturally Safe Practice

MITs' experiences in a multicultural healthcare context

### TAILORED COMMUNICATION METHODS BASED ON CONTEXTUAL PATIENT FACTORS

- Use of Visual Aids and Non-Verbal/Verbal Cues
- Various Patient Presentations in the Department
- Collaborative Interpretation Efforts

### THE USE OF TECHNOLOGICAL AIDS FOR IMPROVED PATIENT UNDERSTANDING

- Use of Translation Applications
- Technology-Abled Instruction
- Use of Pre-Established Prompts



## Implications in Practice

### Reflective Practice

(Bleiker et al., 2018; Brooks et al., 2019; Chau, 2020; Makanjee et al., 2018; Taylor et al., 2021)

1. Awareness of one's own values, beliefs, preferences and culture
2. How might my own values impact the values, beliefs, attitudes affect the quality of care I provide to patients of culturally diverse backgrounds?
3. Extend cultural awareness towards other cultures identified within the increasingly culturally diverse patient population – applied to the medical imaging context  
→ What cultural or religious aspects do I need to consider when positioning patients for X-rays/CT?
4. Take care in explaining clear instructions to the patient and double-checking before positioning  
→ E.g. "I understand this is required for cultural or religious reasons, but for imaging purposes and for me to help you in the best way I can, we do need to remove it for the X-ray..."
5. Advance skills in interpreting verbal and non-verbal cues from patients



## CONGRATULATIONS NICA ABRASSADO



Nica has been conducting a study exploring and describing MITs experiences of communicating with patients in Tamaki Makaurau's (Auckland's) multi-lingual and multi-cultural healthcare settings. Results were presented at the NZIMRT conference in Queenstown in September. Nica won the prize for the best student MIT presentation!!

Nica and Sibusiso intend to grow this project in future. Ka rawe - kia mau tonu te mahi

It's amazing to see our kairangahau "doing good stuff" & sharing it with us. We look forward to seeing where this kaupapa takes you next

Te KapaHaka o

# Taamaki ki Raro

## Te Hui Ahurei ki Rangiriri

E ngaa uri whakatupu, ngaa marae maha ngaa matawaka o roto o te kei o Tainui, nau mai haere mai ki ngaa parakitihī moo Tamaki ki Raro.

Come one, come all and join Taamaki ki Raro as we prepare for the Te Hui Ahurei ki Rangiriri.

### Parakatihi - 01 & 02

**Ki whea: Te Kohanga Reo O Pukeroihi**  
**Raatapu 15 & 22 o Whiringa aa Nuku**  
**Te Waa: 1-3 ahiahi**

### Etahi Tikanga

- Whakaaro kai
- Koha ki te whare

### Practice #01 & 02

**Venue: Te Kohanga Reo o Pukeroihi**  
**Sunday 15th, 22nd October**  
**Time: 1pm - 3pm**

### To Bring

- Plate of food to share
- Donation to the venue

• Please attend practices to be added to "2023 Tāmaki ki Raro - Rangiriri 18th Nov" facebook page.

• Online practices and further Sunday practices will be confirmed 22nd Oct.

• Kohanga address: 44 Beach Road, Papakura, Auckland.



### TE AHUREI O RANGIRIRI

COMMEMORATING 160  
YEARS SINCE THE  
INVASION OF RANGIRIRI

17TH - 19TH OF NOVEMBER 2023

WE INVITE ALL  
WAIKATO RAUPATU  
MARAEO TO REGISTER  
YOUR KAPA



### CONTACT

ADMIN@RANGIRIRI.COM

PHONE: 0800 726 444



### KAIRANGAHAU HUI

Iwi United Engaged have started the ball rolling to bring everyone together under the one roof. It is our desire to introduce: Kairangahau to te Ao Maaori by way of a "Hui a Motu"

#### HUI 1 - PROPOSED DATE - APRIL 2024

Kei Turangawaewae Marae - Ngaaruawaahia

#### HUI 2 - PROPOSED DATE - OCT 2024

Kei Ngaa Hau e Wha Marae - Otautahi (TBC)

If you are interested in being part of this kaupapa contact Whaea for more details: [whaea@iue.net.nz](mailto:whaea@iue.net.nz)



## The latest Whaia Te Tika session @ Beaufords House in Totara Park ABI Kairangahau @ their best

You are all doing good stuff in your areas of rangahau. Please share it with us so we can share it with whānau.

If you haven't already, we would love to receive your introduction/pepeha, photo and brief summary of your mahi.

If you have achievement to share, we would also love to hear about them and share them through our newsletter.

## UNDERSTANDING AND PRIORITISING MĀMĀ AND PĒPI HEALTH RESEARCH FOR WHĀNAU MĀORI

Wednesday 15th November 2023 11am - 1pm



SCAN FOR MORE  
DETAIL & TO  
REGISTER



This co-hosted webinar by [Te Aukume a Hine te Iwaiwa](#), the [Perinatal Society of New Zealand](#) & the [ON TRACK Network](#) will be of interest for perinatal researchers, as well as Māori health researchers and healthcare professionals including midwives, obstetricians, and general practitioners.

### Topics that will be covered include:

- Overviews of Te Aukume a Hine te Iwaiwa, the Perinatal Society of New Zealand, and the ON TRACK Network
- Findings of the Te Aukume a Hine te Iwaiwa
- A reminder of the ON TRACK Network national research prioritisation project and,
- Updates from the Te Aukume a Hine te Iwaiwa

Please register in advance to receive viewing details even if you intend to watch the event at a later time. You may want to consider arranging your own local hui to allow your teams to learn together and make it something social too!



### Whaia te Tika

Southern Series for 2024 is live. Register NOW:  
<https://www.cmdt.org.nz/event-details/matauranga-maori-whaia-te-tika-southern-series>

#### Dates

- 16/01/24 10am-1pm Workshop 1 (online)
- 23/01/24 10am-1pm Workshop 2 (online)
- 26/01/24 10am-4pm Waananga for workshop 3 and 4 (onsite in Dunedin)
- 08/02/24 10am-1pm Workshop 5 (online)
- 09/02/24 10am-1pm Workshop 6 (online)
- 04/03/24 10am-4pm Waananga for workshop 7 and 8 (onsite in Dunedin)

Kia kaha

Let us stand strong together to advance Maaori health and wellbeing through culturally responsive rangahau

## ACKNOWLEDGEMENTS



## Research Assistant Opportunity

### Job Description

Te Whiwhinga mahi | The opportunity

In Aotearoa Cleft Lip and/or Palate (CL/P) affects one baby out of 560 babies born, which may surprise you. It is a common condition and yet there is limited research into the factors contributing to a cleft. We seek a Māori Research Assistant to join our team in the Department of Obstetrics and Gynaecology. This role will reach out to Māori who qualify for this study, whether pēpi has a cleft or whether they are a non-cleft participants. Māori have a higher rate of cleft palate than non-Māori in Aotearoa. With investigation, we may be able to identify a genetic or gene + environment factor as to why this may occur, and we may be able to address this.

The current research team will support the appointee, including the Māori Steering Committee, who've been working together since 2018.

Critical qualities for this role:

- A display of Manaakitanga in demonstrating integrity, sincerity and respect towards Māori beliefs, language and culture.
- Whakawhanaungatanga, establishing relationships with whānau.

Essential duties:

- Contacting whānau affected by cleft lip and/or palate, explaining the aims of our research, seeking consent to participate, interviewing, following up until participation cycle is complete
- Contacting whānau not affected by cleft, explaining the aims of our research, seeking consent to participate, interviewing, following up until participation cycle is complete
- Proposting/creating initiatives to increase whānau participation
- Excellent & timely communication with other members of the research team

This is a part-time, 19 hours per fortnight, on a fixed-term contract until the end of September 2024. The salary range for this role is \$56,600 - \$70,600 prorated per annum, depending on experience and qualifications. This role is open to applicants across Aotearoa as it can be managed remotely.

Please review this [position description](#) for more detailed information on the role accountabilities and requirements using the link below

<https://jobs.smartrecruiters.com/TheUniversityOfAuckland/743999933449728-maori-research-assistant>

## JOB OPPORTUNITY

### Hearing Therapist

Your Way | Kia Roha

Manukau, Auckland

Community Development (Community Services & Development)

Full time

\$55,000 per annum + on job training

Hearing Therapy is a national mobile, community-based service that is holistic in its approach and offers a variety of services including information, assessments, aural rehabilitation and training. The role will be supported by a team of experienced colleagues, Team Leaders and a Learning and Development Coordinator who are focused on improving Hearing Health in their communities.

This is a permanent full time role working 37.5 hours per week, Monday to Friday in Manukau.

To be successful in the Hearing Therapist Trainee role the applicant:

Will be able to respect and value diversity and be adaptable to the needs of different cultural needs and disability matters both

Will have exceptional interpersonal skills with the ability to build strong relationships and networks with a range of people whilst also being able to work independently

Should have an awareness or be willing to learn more about the Health and Disability Services offered across the region.

Will be able to manage their time across the week and meet all deadlines

Have an understanding and be able to use Microsoft office products.

Have a current Full New Zealand Drivers licence.