

IUE

Iwi United Engaged, Ltd

KAWERONGO

Issue:

Ko te Atua too taatou piringa ka puta ka ora.
Paimarire

Hui-Tanguru (Feb) 2024



Misty Edmonds
Te Tumu Whakarae
CEO



Steph Shankar
Mana Kaiwhakahaere
Puutea
Financial Operation Manager



Kahu Ama
Tapuhi Maaori
Kaiwhakahaere
Administrator

Meet the Team

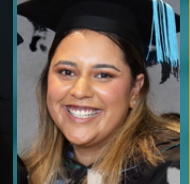
IWI UNITED ENGAGED LIMITED
Commitment to advancing Maaori health and wellbeing through the development of culturally informed and relevant research.



Whaea Te Inuwai
Kaitautoko
Cultural Support



Xiale Paane
Tapuhi Maaori
Pasifika Cultural
Advisor



Langi Kepu-Kosene Apiata
Tapuhi Maaori
Pasifika Cultural
Advisor

TAAKIRI TUU TE KOTAHITANGA - TAAKIRI TUU TE MANA MOTUHAKE TOITUU TE TIRITI

*On behalf of Iwi United Engaged,
I would like to take this opportunity to acknowledge
our whaanau out and about protesting the protest,
caring and sharing, travelling to and fro, near & far*

*Maaori maa, Tangata Tiriti maa - Social media Colonisation is a real thing and we feel
their passion.*

*We wouldn't be "true to our mahi" if we didn't at least acknowledge what was
happening around us.*

*It has become surreal in some instances beginning with
Te Hui aa Motu called by Kiingi Tuheitia Jan 20,
followed by Te Ratana Celebration Jan 25 and then
Te Tiriti o Waitangi*

*This is a friendly reminder of the damage control required, of the truce that we
understand may hurt,
of the History that will be told & again may hurt*

*Heoi, ahakoa te aha ka haere tonu te kaupapa o
Iwi United Engaged e paa ana ki te hononga o Te Ao e rua. Kia kaha koutou ki te mahi
na te mea*

Naau te rourou, naaku te rourou, ka ora ai te iwi

Manaaki Tuuhaahaa

(Separate Support)

Monday February 12, 2024 - 2.00 - 3.00 pm

One off opportunity to share and query feedback on this!

Video call link: <https://meet.google.com/jgb-bqfe-nmb>

Nau mai Hoki mai

Matua John

REVISION - PEPEHA WHAANAU



Teenaa koutou...
 Ko te maunga
 Ko..... te awa
 Ko te waka
 Ko te iwi
 Ko tooku ingoa
 Teenaa koutou
 Teenaa koutou
 Teenaa taatou katoa

Teenaa koutou...
 I whaanau mai au i.....
 I tipu ake au i
 E noho ana au i
 E mahi ana au i
 Ko tooku ingoa
 Teenaa koutou
 Teenaa koutou
 Teenaa taatou katoa

TOITŪ TE TIRITI

Authors: Suzanne Pitama, Tracy Haitana, Maira Patu, Bridget Robson, Ricci Harris, Christina McKerchar, Terryann Clark, Sue Crengle

Published in: The New Zealand medical journal. Volume 137. Issue 1589. Pages 7-11. Feb 02, 2024. Epub Feb 02, 2024.

ABSTRACT:

Concern about the new coalition Government's proposed 100-day plan has seen the term "Toitū Te Tiriti" come to prominence within the Māori community, serving as a call to action expressed in art, community placards, social media and more recently within forums such as hui-ā-motu and Rātana Pā. This term refers to the need to uphold and honour Te Tiriti o Waitangi.

The celebration of Waitangi Day traces its origins back to 1934, with the formal annual commemorations of the signing of Te Tiriti o Waitangi commencing in 1947. Notably, the designation of Waitangi Day as a public holiday occurred in 1974. These pivotal events collectively underscore a progression toward acknowledging the intricate tapestry of Aotearoa New Zealand's Indigenous and colonial history.

Scholars and legal experts have meticulously documented the pivotal role of Te Tiriti o Waitangi as the foundational document of Aotearoa New Zealand.

WANT TO READ MORE?! Click on the link below to access this beautiful editorial

<https://drive.google.com/file/d/1flbqhAFPYlzhk-caBnERAJ8Fyy1nU-f/view?usp=sharing>

MANAAKI SESSIONS

Hononga

<https://meet.google.com/ksb-xndb-sge>

**NOTE: TIME
CHANGE**

**Next Manaaki
session**

22/02/2024 @ 12 pm

CONSULTATIONS

To set an appointment please
visit our booking system
www.picktime.com/IUEbookings

Choose your consultant
through locations ie:
Whaea Misty
consultation/Manaaki.

Pick a preference of kanohi-
ki-te-kanohi OR zui, the
choice is yours.

Include a brief summary of
your needs and study

BOOK NOW

It is well documented that inequities exist for Māori in healthcare. Mātauranga Māori is a significant body of knowledge that informs tikanga Māori and is the foundation of many values and beliefs that we hold as Māori.

The research team and IUE are offering an opportunity for you to share your view through Te Aō Māori on the meaning of

applying artificial intelligence to mammography images
for you and your whānau so it may inform culturally appropriate rangahau.

MEET THE KAIRANGAHAU



Alex Trevarton
Ngāpuhi, Pākehā
He Kaimātai Koiora
a.trevarton@auckland.ac.nz



Annette Lasham
Tangata Tiriti
He Kaimātai Koiora



Nicholas Knowlton
Tangata Tiriti
He Tohunga Tatauranga

In today's news, you frequently hear about the use of Artificial Intelligence (AI) in different situations. However, what it is/how it works is not often explained, causing some unease. In simple terms, AI essentially involves computer programs rapidly carrying out complex tasks that we can already do, but would take us an endless amount of time and paper with no mistakes. AI is like a supercharged version of us!

So AI is a new tool that has the potential to revolutionize how we approach various tasks, especially if we can use it to improve healthcare. But to harness its power effectively, we need to learn how to use it wisely and ethically.

In health care, AI can already diagnose lung and colorectal cancers faster and more accurately than doctors. At a mammogram screening (pictured), AI can calculate breast density more accurately than a doctor, and do so before the doctor even has chance to take a look! In fertility, AI can identify which embryos have the best chance of growing into a healthy pepi. AI can estimate and remove bias from decision making, lower costs, and enable more people to access health care in ways that are convenient to them.

BE A POSITIVE VOICE FOR WHĀNAU MĀORI IN HEALTHCARE

If we know what you and the whānau think about AI in healthcare, then we can adapt our mahi to meet your needs, and eventually, improve the health system in a way that's useful to you. Please take 5 minutes to consider and respond to the questionnaire in the link below. In a future IUE newsletter, we'll provide an anonymous summary to let you know what people thought.

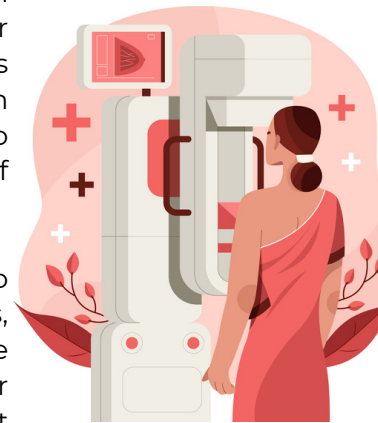
Please let us know what you think here
(or use the link below) and send any
further whakaaro or pātai to Alex:
a.trevarton@auckland.ac.nz

THE LINK



<https://forms.gle/pRqkwroHtQcrdMcDA>

THE FACTS



Ko Piko toku Maunga
 Ko Parengarenga toku Moana
 Ko Waitiki toku Awa
 Ko Korohaupo toku Waka
 Ko Ngati Kuri toku Iwi
 Ko Te Hapua toku Hapu
 Ko Te Reo Mihi toku Marae
 Ko Murray toku Whanau
 Ko Tuakau toku Rohe
 Ko Mystie Jacobsen ahau



Ko Jennifer ahau



I am a Professor in Ophthalmology at the University of Auckland. I lead a group of researchers in the Ocular Surface Laboratory (OSL) to undertake research relating to the eye's surface. I am passionate about working with Māori colleagues and students to reduce ocular health inequities for Māori.



We are seeking Māori participants

Dry Eye Rangahau - global study

You will be offered

Free dry eye test
 (full ocular surface review) with kōrero (approx. 45mins)

\$30 Voucher
 (Countdown or MTA)

Free parking provided
 at the University of Auckland, Grafton Campus

Your participation will contribute towards improved ability to distinguish causes for dry eye

You do not need to have dry eyes to participate

Interested?

for further information please contact us

Supervisor:
 Professor Jennifer P Craig
 Department of Ophthalmology
jp.craig@auckland.ac.nz

Research assistant/Co-investigator:
 Mystie Jacobsen
mystie.jacobsen@auckland.ac.nz

APPROVED BY THE UNIVERSITY OF AUCKLAND HUMAN PARTICIPANTS ETHICS COMMITTEE
 ON 20 APRIL 2022 FOR 3 YEARS, REFERENCE NUMBER AH24154

A Whaia Te Tika series

**Te Aō Mārama
 Raupapa**

**COMING
 SOON**

*Expand your knowledge
 and skills of a kaupapa Māori
 approach to research and
 engagement*

An introduction into the importance of whanaungatanga our relationship to the world through a Māori lens – a grounding of tikanga - customary values and knowledge through the 5 principles of Te Tiriti o Waitangi.

BREAKTHROUGH IN FUTURE HEARING THERAPIES: COMING FROM OVERSEAS AUDITORY SCIENTISTS.



Honourary IUE member Haruna here, reporting from Los Angeles at the ARO2024* to deliver hot auditory research to whānau!

(*Association for Research in Otolaryngology, essentially the biggest ear science conference in the world).

What's the news?:

Ear scientists worldwide are very excited by the latest report from Chinese and US groups about the first-in-human clinical trials showing success for gene therapy for deafness.

Congenital hearing loss affects approximately 0.1% of babies worldwide, and approximately 8% of this is due to a variation in the gene for important inner ear proteins called Otoferlin.

Five different companies & groups (Akouos, Regeneron, Sensorion, Fudan University and Otovia therapeutics) are currently running OTOF-gene therapy trials for congenital hearing loss caused by the otoferlin-gene variant. They introduce otoferlin-gene to the inner ear via surgical access and/or injection. Treatments are given to 1-8-year-old children, and so far, the hearing is restored in almost all those who were treated. Parents of those children are reporting how their children are starting to respond to sounds and quickly learning to recognise their names and different sounds in the environment. Clinical trials are taking place in China, USA, Spain.

Lab science to the clinic: While gene therapy comes with many controversies, this represents a completely new option made available to those affected families. This Otoferlin-gene therapy is based on decades of scientific research in animal models to understand how Otoferlin works in the ear and to check the safety of the therapy. Trials are still in the early stages, and we are keeping a close eye on the development. Auditory scientists are excited and motivated by this example case where basic science has contributed to creating a new treatment option.

What does it mean for whanau in Aotearoa?: The OTOF-gene therapy is a very special case and only works on those diagnosed with otoferlin-genetic variation. It also likely needs to be delivered in a timely manner during early childhood to be effective. It only applies to a small number (8% of 1/1000), and to find these patients who can benefit, we need more genetic testing and information about the cause of hearing loss in Aotearoa.

It is not clear how many cases of hearing loss we have from the otoferlin-gene variant in Aotearoa /let alone the numbers in Māori population. Having more information about hearing loss types in our own population is the key to bringing this treatment to New Zealand.

For more information from ARO press release:

https://aro.org/wp-content/uploads/2024/01/ARO-press-release-Otoferlin-gene-therapy-FINAL-1_30_24.pdf

Ngāti Whātua Ōrākei

Ko wai mātou | Who are we

Whai Māia is the tribal development arm for Ngāti Whātua Ōrākei. We are a diverse business encompassing education and learning, careers and employment, housing, health and wellbeing, culture and heritage, and environmental and resource management.

Our people are the heart of Ngāti Whātua Ōrākei. Our goal is for whānau to be loved and nurtured, strong and happy, stand tall and proud, confident and enjoy life in comfort, companionship and inclusion.

Te Whiwhinga Mahi | The opportunity

Your role will be to assess the growth and development of tamariki and to be a trusted clinical advisor, supporting whānau to choose how they'd like to raise their tamariki by providing sound clinical advice to support their decision making. You will foster relationships and develop rapport with whānau in the community, taking a holistic approach to the provision of care.

This opportunity provides the ability to work close to home in a community-based role, Monday to Friday with some flexibility to work around you. We provide ongoing opportunities for professional development and growth.

Ngā tino pūkenga/whēako | Essential skills/experiences for the role:

- Be a Registered Nurse
- A full clean NZ Driver's License.
- Current Annual Practicing Certificate
- Have or be committed to complete 12month Post Grad Certificate in Well Child Tamariki Ora (we will cover the cost for this).

Te Tono | How to apply:

- To request a position description or apply for this role, you can submit your CV and Cover Letter through to Peopleculture@nwo.iwi.nz. We look forward to hearing from you

Registered Nurse - Tamariki Ora Well child Services

Wanting to make a difference?
Passionate about tamariki health?

Whakaaturanga Rangahau

Wiki Hauora

(Health Week Research Expo)



Registrations have now closed for this kaupapa and IUE are in the process of finalising details to commence planning with our 30 kairangahau team who will be joining us for the expo.

Relative to Pae ora-Healthy futures: it is hoped that this expo can highlight areas of rangahau and health aligned with a condition/disease that is impacting our whānau in an innovative way (display, interactive activity), including resources appropriate for the tamariki and rangatahi to take home (over the period of 3 days). Day one will be our tamariki years 0-6, day two will be our Fanau Pasifika years 7-13, and day 3 will be Te Whānau O Tūpuranga years 7-13

Kaupapa that will be shared with our whānau and whānui over the expo include: AI technology for health in various areas, eye health, vision and audiology, neuroscience, māmā and pēpi wellebing, speech and language, mental wellbeing and much more.

ACKNOWLEDGEMENTS

UNIVERSITY OF AUCKLAND
Waipapa Taumata Rau
NEW ZEALAND

MEDICAL AND HEALTH SCIENCES

Mahitahi Trust
Ma te mahi tahi ka whiwhi ora
People together nurturing wellness

TE TĪOKI MATAORA
MEDTECH RESEARCH TRANSLATOR

Papakura Marae
Incorporated Society

Kia Aroha Campus
Te Whānau o Tūpuranga • Fanau Pasifika
Developing Warrior-Scholars Y0-13

THE UNIVERSITY OF AUCKLAND
Te Whare Wānanga o Tamaki Makaurau
NEW ZEALAND

AUCKLAND BIOENGINEERING INSTITUTE

Te Whatu Ora Health New Zealand **AUT UNIVERSITY NEW ZEALAND** **Iwi United Engaged**

Kōrero Mai

Have a say in what is important for you and your whānau about inpatient rehab at The Wilson Centre

The Wilson Centre

Have you or someone you know spent time here?

Your voice matters

Your experiences and ideas will help us identify the top 10 priorities so kairangahau (researchers) and funders can ensure we are meeting whānau needs

Take the survey now

<https://redcap.aut.ac.nz/surveys/?s=NWECJ3XDNPFKCNYH>

Or contact us for more information and other ways you can participate
lynne.clay@aut.ac.nz

Dr Jimmy Chong Te Whatu Ora
Prof Denise Taylor AUT
Misty Edmunds CEO, IUE
Dr Lynne Clay AUT

CONFIRMED "Hui a Iwi" "Hui a Rangahau" November 22 - 23, 2024.

Turangawaewae Marae Ngaaruawaahia

WATCH THIS SPACE - more details and registrations will be coming out soon

If you are doing good stuff and would like us to share it through our pānui, please contact us whaea@iue.net.nz