

Ki te kaahore he whakakitenga, ka ngaro te Iwi

Without foresight or vision, the people will be lost

IUE

Iwi United Engaged, Ltd

KAWERONGO

Issue:

*Ko te Atua too taatou piringa ka puta ka ora.
Paimaarire*

Poutu te rangi (March)



Misty Edmonds
Te Tumu Whakarae
CEO



Steph Shankar
Mana Kaiwhakahaere
Puutea
Financial Operation Manager



Kahu Ama
Tapuhi Maaori
Kaiwhakahaere
Administrator

Meet the Team

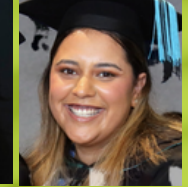
IWI UNITED ENGAGED LIMITED
Commitment to advancing Maaori health
and wellbeing through the development of
culturally informed and relevant research.



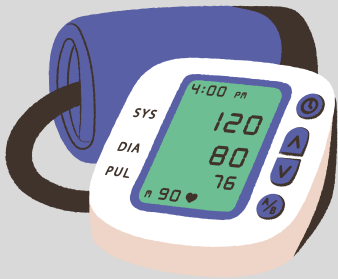
Whaea Te Inuwai
Kaitautoko
Cultural Support



Xiale Paane
Tapuhi Maaori
Pasifika Cultural
Advisor



Langi Kepu-Kosene Apiata
Tapuhi Maaori
Pasifika Cultural
Advisor



Middlemore ticked all the boxes

When you hear the name Dr Samuels, a certain Dr TK Samuels from Shortland Street could come to mind. But our very own real-life Dr Samuels is based right here at Middlemore Hospital and he's aiming to be an ophthalmologist. Dr Isaac Samuel, the real one, graduated from the University of Auckland's Faculty of Medical and Health Sciences last year and started here as a junior house officer only a few short weeks ago.

"Middlemore was my first choice of hospital to work at.

"I love this place and I love South Auckland, so Middlemore ticked all of the boxes for me," Isaac explains.

Dr Samuels did his trainee internship here at Middlemore Hospital.

"It is a great place to work. The staff here are passionate and there is a real sense of camaraderie.

"There is no better place for a young doctor to train and get exposure to a diverse population and see a variety of health conditions," he says.

Isaac, whose iwi is Ngaati Hauaa, Ngaati Tuuwharetoa, Waikato-Tainui, grew up in central Auckland, and describes his upbringing as 'a bit sheltered.' His koro (grandfather) lived in South Auckland and he would often visit and says because of this, South Auckland, too, felt like home.

When Isaac's koro became unwell and moved in with the whaanau, Isaac became involved in his care and his interest in Maaori health only grew, and with each trip to his marae leading to a heightened awareness of just how many of his people required and deserved quality healthcare.

"A big reason I wanted to work here is because of the demographics and diversity. We have a large Maaori and Pacific population and helping people, especially my own people, is why I got into medicine.

"When you can relate to your patients, it can be easier for them to trust you.

This is why it is important to have more Maaori and Pacific in the health workforce - because our population is diverse and healthcare needs to be diverse to support everyone and in turn, we may achieve better outcomes for them," says Isaac.

Isaac hopes to see a Maaori and Pacific Service grow but in the meantime is loving his work here at Middlemore.

Thanks for sharing your story Isaac.

**If you are doing good stuff and would like us to share it through our pānui
please contact: whaea@iue.net.nz**



HUI AA KAIRANGAHAU

NOVEMBER 22 - 23, 2024

**KO TE ATUA TOO TAATOU PIRINGA
KA PUTA KI TE WHEIAO
PAIMAARIRE**

**VENUE: TURANGAWAEWAE MARAE
29 RIVER ROAD - NGARUAWAAHIA
POOWHIRI/WELCOME: 10 AM**

*He karanga teenei ki a koe kia haere mai ki te whakarongo koorero aa te Maaori
Toituu te Maaori, Toituu te Kotahitanga, Toituu te Kiingitanga. Paimaarire*

This is a call to you, to come and listen and talk to Maaori

Maaori will remain, Unity will stay and Kiingitanga will remain. Good and Peaceful

It is with much excitement that we invite you to the Hui-a Kairangahau at Turangawaewae Marae on the 22nd and 23rd November 2024. We are seeking positive ways to directly change the practice of health research in Aotearoa, to advance Māori health outcomes, address the health inequities that exist for Māori in Aotearoa, honouring Te Tiriti o Waitangi. We are privileged that Turangawaewae are supporting our kaupapa, allowing us to host this event, as the home of te Kīngitanga (Māori King) and a Marae that is equipped to cater for thousands of guests.

We propose to utilise a kaupapapa Māori approach to engage with communities for our tangata Tiriti kairangahau, so they may have a deeper understanding of how we may bridge the gap between health research and practice. Te Hui-a Kairangahau will provide a Marae-based community forum, offering researchers a window into Te Ao Māori. We will take early research out of the University to engage with Māori communities, using tikanga to ensure a safe and culturally appropriate environment, providing space for Māori voices to share their lived experiences from an individual, whānau and community perspective. We will create a forum that prioritises whakawhanaungatanga and future research ideas that are led by Māori, for Māori. And we would love for you to join us!

REGISTRATION IS A MUST

Please see here to find out more and register:

<https://forms.gle/kXHhccFwZmxBvm4EA>

MANAAKI SESSIONS

Hononga

<https://meet.google.com/ksb-xndb-sge>

NOTE: TIME CHANGE

Next Manaaki session

14/03/2024 @ 12 pm

CONSULTATIONS

To set an appointment please visit our booking system www.picktime.com/IUEbookings

Choose your consultant through locations ie: Whaea Misty consultation/Manaaki.

Pick a preference of kanohi-ki-te-kanohi OR zui, the choice is yours.

Include a brief summary of your needs and study

BOOK NOW

A CALL FOR A MĀORI VOICE: PLEASE TAKE THE TIME TO RESPOND FOR OUR WHĀNAU HEALTH

It is well documented that inequities exist for Māori in healthcare. Mātauranga Māori is a significant body of knowledge that informs tikanga Māori and is the foundation of many values and beliefs that we hold as Māori.

The research team and IUE are offering an opportunity for you to share your view through Te Aō Māori on the meaning of

applying artificial intelligence to mammography images for you and your whānau so it may inform culturally appropriate rangahau.

MEET THE KAIRANGAHAU



Alex Trevarton
Ngāpuhi, Pākehā
He Kaimātai Koiora
a.trevarton@auckland.ac.nz



Annette Lasham
Tangata Tiriti
He Kaimātai Koiora



Nicholas Knowlton
Tangata Tiriti
He Tohunga Tatauranga

In today's news, you frequently hear about the use of Artificial Intelligence (AI) in different situations. However, what it is/how it works is not often explained, causing some unease. In simple terms, AI essentially involves computer programs rapidly carrying out complex tasks that we can already do, but would take us an endless amount of time and paper with no mistakes. AI is like a supercharged version of us!

So AI is a new tool that has the potential to revolutionize how we approach various tasks, especially if we can use it to improve healthcare. But to harness its power effectively, we need to learn how to use it wisely and ethically.

In health care, AI can already diagnose lung and colorectal cancers faster and more accurately than doctors. At a mammogram screening (pictured), AI can calculate breast density more accurately than a doctor, and do so before the doctor even has chance to take a look! In fertility, AI can identify which embryos have the best chance of growing into a healthy pepi. AI can estimate and remove bias from decision making, lower costs, and enable more people to access health care in ways that are convenient to them.

THE FACTS



BE A POSITIVE VOICE FOR WHĀNAU MĀORI IN HEALTHCARE

If we know what you and the whānau think about AI in healthcare, then we can adapt our mahi to meet your needs, and eventually, improve the health system in a way that's useful to you. Please take 5 minutes to consider and respond to the questionnaire in the link below. In a future IUE newsletter, we'll provide an anonymous summary to let you know what people thought.

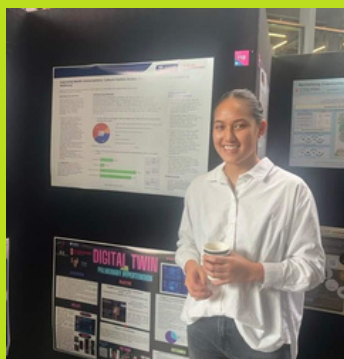
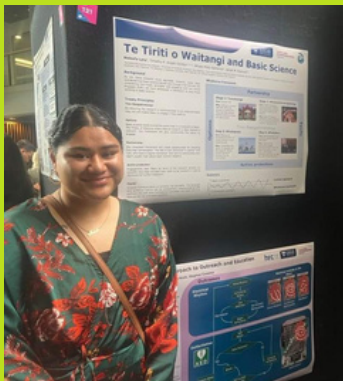
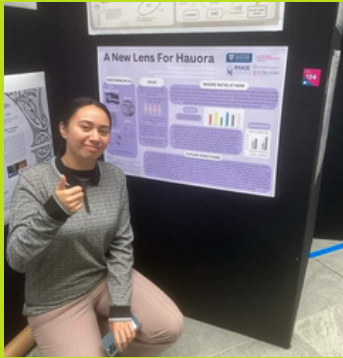
Please let us know what you think here

(or use the link below) and send any further whakaaro or pātai to Alex: a.trevarton@auckland.ac.nz

THE LINK



<https://forms.gle/pRqkwroHtQcRDmcDA>



ABI SUMMER INTERNSHIPS MANAAKI PATHWAY

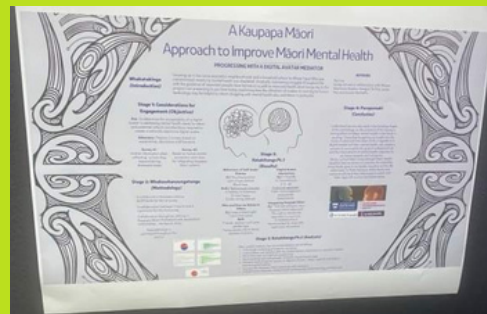
Ka nui te mihi ki a koutou e mahi ana ngaa mahi hei painga mo te katoa

Beginning with far left being blessed with the presence of our (2) taura from Otepoti, Rebekah Kennedy and Kelis Tosala.

Such commitment alone should be rewarded. Well done ladies it was a pleasure to meet you both.

Coming down the right side with Emma Le Quesne "Empowering Maaori Traumatic Brain Injury" then, Fatima Hussein is "Revitalizing Heart Health"

Below left, Meleofa Latu inspired IUE with her version "Te Tiriti o Waitangi and Basic Science" and Naketa Phillips was with Whaea Haruna Bridging the Deaf and Hearing Work through a Kaupapa Maaori approach



Unfortunately, Ron couldn't present his "Kaupapa Maaori Approach to Mental Health" personally I think it was worth a mention. Well done Ron.

Once again coming down on the left side Hinemareikura Ngatai and her whakaaro on the "ECG Patch" of the Heart under Matua Jichao

Louise Veadrum is "Inspiring Health Conversations" within her choices and that is awesome Louise.

Miss Holly (bottom left) is "Revitalizing Community Based Media Care for Tamariki in the Northland how fortunate are our tamariki. Ngaa mihi.

Last but not least the overall winner Mererahira Meagan Te Hira is twinning it with "Digital Twin - Pulmonary Hypertension"

Once again big ups to you all for all the beautiful mahi Supervisors for your support and to those behind the scenes :)
Xiale and Langi
Ngaa mihi aroha

**Ngāti Whātua
Ōrākei**

**Registered Nurse
Tamariki Ora**

**Wanting to make a difference?
Passionate about tamariki health?**

Ko wai mātou | Who are we

Whai Māia is the tribal development arm for Ngāti Whātua Ōrākei. We are a diverse business encompassing education and learning, careers and employment, housing, health and wellbeing, culture and heritage, and environmental and resource management. Our people are the heart of Ngāti Whātua Ōrākei. Our goal is for whānau to be loved and nurtured, strong and happy, stand tall and proud, confident and enjoy life in comfort, companionship and inclusion.

Te Whiwhinga Mahi | The opportunity

Your role will be to assess the growth and development of tamariki and to be a trusted clinical advisor, supporting whānau to choose how they'd like to raise their tamariki by providing sound clinical advice to support their decision making. You will foster relationships and develop rapport with whānau in the community, taking a holistic approach to the provision of care. This opportunity provides the ability to work close to home in a community-based role, Monday to Friday with some flexibility to work around you. We provide ongoing opportunities for professional development and growth.

Te Tono | How to apply:

- To request a position description or apply for this role, you can submit your CV and Cover Letter through to Peopleculture@nwo.iwi.nz. We look forward to hearing from you

IUE
Iwi United Engaged, Ltd

An online introduction to the popular Whaia Te Tika series over 2 x 6 hour workshops
Limited spaces available so get in quick

Register NOW at www.eventbrite.co.nz or

click on the dates on the following page

Any further questions or queries please email Kahu@iue.net.nz

WORKSHOP 1

May 1st 10am-1pm
<https://www.eventbrite.co.nz/e/whaia-te-tika-introductory-raupapa-workshop-1-tickets-850496496917>

May 3rd 10am-1pm
<https://www.eventbrite.co.nz/e/copy-of-whaia-te-tika-introductory-raupapa-workshop-1-tickets-850498944237>

June 4th 10am-1pm
<https://www.eventbrite.co.nz/e/copy-of-copy-of-whaia-te-tika-introductory-raupapa-workshop-1-tickets-850499505917>

WORKSHOP 2

May 13th 10am-1pm
<https://www.eventbrite.co.nz/e/850500077627>

May 14th 10am-1pm
<https://www.eventbrite.co.nz/e/whaia-te-tika-introductory-raupapa-workshop-2-tickets-850500739607>

June 7th 10am-1pm
<https://www.eventbrite.co.nz/e/whaia-te-tika-introductory-raupapa-workshop-2-tickets-850501511917>

Don't be a hoha - leave a koha



I was born at Waitakere Hospital and grew up mostly in west Auckland to a father who was born in Lebanon to Palestinian parents and a mother who was born in Tāmaki Makaurau. At the age of 13 I was diagnosed with moderate to severe hearing loss and at the same time my mother, who had been losing her hearing for quite some time, went completely Deaf. It was certainly a challenging time for the both of us, however I have not let my hearing disability define me. In saying that it is a large part of who I am and was the main reason I was so passionate about taking on the role of CEO at the NFDHH, so I could help our community and bring my lived experience to the Foundation. I live in rural Warkworth with my husband, Patricio, who is from Chile, my 15- year-old son Kai, dog Mac and two cats, Kimba and Nigel.

NATASHA GALLARDO



Ko Te Kohurau te maunga
Ko Kākaunui te awa
Ko Ngāi Tahu, ko Te Atiawa ngā iwi
Ko Moeraki te marae
No Whangārei ahau
Kei te noho ahau ki Tāmaki Makaurau ināianei
Ko Sarah Neilson tōku ingoa

I was born in Morrinsville but grew up in Whangārei, my mother's family comes from Broadwood in Hokianga and my father's family from Wairarapa. I now live with my husband and two young boys in Auckland. I studied audiology at the University of Canterbury and have had various clinical and leadership roles around Aotearoa and overseas over the last 16 years. I now work at Bay Audiology in the area of business improvement. My husband has hearing loss and I am passionate about early intervention for hearing loss and reducing barriers to access hearing healthcare.

SARAH NEILSON



I was born in Middlemore Hospital and have lived in South Auckland all my life. I am from a small family of 4, with my older brother living in San Diego. My father passed away 15 years ago from a brain tumour. During COVID, my mum came to live with us, and she/we loved it so much she has stayed. I also completed my education in South Auckland, attending Leabank Primary School, Manurewa Intermediate, and James Cook High School. I live in Papakura and have done so for 22 years with my husband, Brien, and my 9-year-old daughter, Paige. I have worked in various industries, including construction, medical (St John Ambulance) and Aviation. When the opportunity arose to join the NFDHH family in 2020, I jumped at the chance and have never looked back. My role with NFDHH is the Human Resources Advisor, but I also wear many other hats with the charity.

SHIRLEY RIPPEY

**NATIONAL FOUNDATION FOR
Deaf & Hard of Hearing**

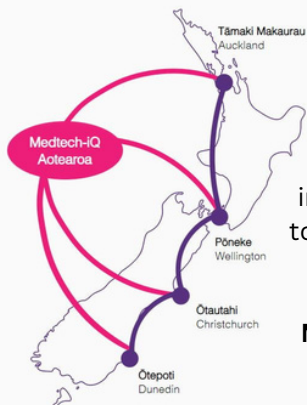
*Meet
the
team*

Upcoming Events

Whakaaturanga Rangahau Wiki Hauora
(Health Week Research Expo)
 28th, 29th & 30th May 2024
 Kia Aroha Campus

Whaia Te Tika Independent Series
 May-June 2024 (Multiple Dates: See details below)

Hui-a-Kairangahau Turangawaewae Marae
 22-23 November 2024



“Medtech-iQ Aotearoa is our national network for innovation in medical devices and digital health. It aims to create a MedTech innovation ecosystem accessible to all that delivers new healthcare solutions, putting the consumer at the centre.”

More info here: <https://www.cmdt.org.nz/medtech-iq-aotearoa>

Our next networking event for Medtech-iQ Tāmaki Makaurau is planned for April 9th and is being hosted at AUT. These events are being hosted quarterly and aim to bring together the local Tāmaki Makaurau MedTech ecosystem, with a few speakers from the community and the opportunity for networking afterwards.

Date: 9 April 2024

Time: 3 pm to 5 pm

Location: AUT Wave Room (WG308), Sir Reeves Building, AUT City Campus, Wellesley Street, Auckland

ACKNOWLEDGEMENTS



Manaaki Tuuhaahaa

Just another safe space to air your views, share your thoughts, about what is going on out there?

Colonization - Racism - Are we or not?

Do we or not? - What do we do? Where to from here?

Interested in being the difference?

Let us know email whaea@iue.net.nz

Registered Nurse working in School Based Health Centre

We are a Designated Character School and cater to the needs of our students from the ages of 5yo – 18yo. We are different and different by choice. If you are looking for a challenge, interested in working within a supportive team, have a passion working with primary, intermediate, and secondary students, then we would love to hear from you.

- Monday to Friday 40 hours per week Flexibility with days and hours
- Paid study days and professional development
- Supported by Nurse Specialists from Te Whata Ora Countries Manukau
- Experience as a school nurse preferred but not essential as full training will be given
- Must hold a current NZ nursing practicing certificate and able to work in NZ
- Position commences Term 1 2024

If you hold a current annual practising certificate, work collaboratively, willing to work towards a youth health certificate, diploma, or other then please make contact with Sheridan Hattaway-Martin via email and send through your C.V with references to sheridan.hattaway-martin@kiaaroha.school.nz.

If you are doing good stuff and would like us to share it through our pānui, please contact us whaea@iue.net.nz